



SOUTHERN BAY RACE WEEK

MAY 31 - JUNE 2, 2019

SAILING INSTRUCTIONS

**Organizing Authorities:
Hampton Yacht Club
Cruising Club of Virginia
Old Point Comfort Yacht Club**

The notation (DP) after a rule means that, at the discretion of the Protest Committee, the penalty for a breach of that rule may be less than DSQ. The notation (RC) after a rule means that only the Race Committee or Protest Committee can protest a breach of that rule.

1. RULES

- 1.1** The regatta will be governed by the Racing Rules of Sailing, 2017-2020, as modified herein.
- 1.2** US Sailing Prescriptions to RRS 63.2 and 63.4 will not apply.
- 1.3** J/70 Class Rule I.3 (Support Boats) will apply.
- 1.4** For the Viper Fleet only, Appendix V1 (Penalty at the Time of the Incident) is in effect.

2. ENTRIES

- 2.1** The regatta is open to monohull keelboats or multihulls over 20 feet LOA.
- 2.2** All participating boats must meet current US Sailing Nearshore Safety Equipment Requirements, except that One-Design Fleets must meet safety standards of their class rules.
- 2.3** Eligible boats may enter by doing one of the following:
 - a. Entering online at www.yachtscoring.com ,
 - b. Completing an official SBRW Entry Form (available at www.yachtscoring.com) and mailing it to Lin McCarthy, 4401 Chesapeake Ave, Hampton, VA 23669.
- 2.4** All boats, except those in the Cruising Class, must have a current, valid measurement certificate on file with their appropriate Class Association.
 - a. PHRF ratings will be those posted on the PHRF of the Chesapeake Valid List at the time of the event or a temporary rating issued by a handicapper of PHRF of the Chesapeake.
 - b. Cruising Class ratings will be assigned by the Race Committee and may not be appealed.
 - c. Multihulls must have a current rating certificate from Chesapeake Multihull Assn. (CMA)
- 2.5** An entered boat may not change fleets later than 1800 on Thursday, May 30.
- 2.6** The owner/skipper of each boat entered shall be responsible for the actions of his/her crew and guests. The legal drinking age in Virginia is 21 years old. Proof of age will be required. In the event of a serious breach of conduct, sportsmanship, destruction of property, under age drinking, or failure to comply with a request from any regatta official, the boat or competitor may be subject to expulsion from the regatta.

3. BOAT REQUIREMENTS

- 3.1** A bow number/decal will be supplied to each boat and shall be properly affixed to both sides of the hull at all times while racing. Mounting instructions will be supplied with the decal. (DP)
- 3.2** Once launched, all boats (except Vipers) shall remain in the water until the conclusion of the regatta, except with prior written permission of the PRO. (DP)
- 3.3** All boats (except Cruising Class) shall display either the sail number issued by their National Authority (US Sailing) or the number as maintained by their fleet or class. **All sail numbers on a boat must be the same**, except with prior written permission from the PRO. (DP) (RC)
- 3.4** From the backstay, each boat shall display her class flag or ribbon as per Appendix F. (DP)

4. NOTICES TO COMPETITORS & CHANGES TO SAILING INSTRUCTIONS

4.1 Notices to competitors and Changes to the Sailing Instructions will be posted on the electronic Official Notice Board located at <https://yachtscoring.com/emenu.cfm?eID=6123>.

It is the responsibility of each competitor to check the Official Notice Board for any Official Notices and/or S.I. changes. Courtesy, unofficial written copies may also be posted at HYC.

4.2 Changes to these Sailing Instructions will be posted by 0830 on the day they will take effect, except that any change to the schedule of races will be posted no later than the expiration of the protest time limit on the day before it will take effect.

5. SIGNALS MADE ASHORE

5.1 Signals made ashore will be displayed at the HYC flagpole.

5.2 The display of Flag "AP" ashore accompanied by two sound signals means the start of racing is postponed. The lowering of Flag "AP" ashore with one sound signal means the Warning Signal for the next race shall be made in not less than 60 minutes. This changes RRS Race Signals "AP".

5.3 If possible, any abandonment, postponement ashore, or relocation of racing to the harbor will be posted on the electronic Notice Board by 0830 and broadcast on the designated VHF radio channels for as long as the RC deems necessary. If such a decision is made later than 0830, the electronic posting and radio announcement will be made ASAP and the timing of the posting shall not be considered grounds for redress. This changes RRS 62.1.

6. RACING AREAS AND RENDEZVOUS

6.1 The assignment of classes/fleets to particular racing areas and courses is the sole responsibility of the Race Committee. Such assignments are done to maintain the quality of racing and shall not be considered grounds for redress. This changes RRS 62.1.

6.2 One-Design Course:

(a) Friday: Multiple windward/leeward races in harbor. (See Appendix B)
Rendezvous at: 36 56.97 N 76 22.40 W Y N "J" NE of Mid. Ground Lt
**** Note 1:** On Friday & Sunday, PHRF C & Non-Spin fleets will race on the OD Course.

(b) Saturday: Multiple windward/leeward races in harbor. (See Appendix B)
Rendezvous at: 36 58.13 N 76 22.00 W R N "20" off Hampton Flats
**** Note 2:** Should the PHRF Distance Race be relocated into the harbor on Saturday, OD Course boats will rendezvous and race off Craney Island, just as on Friday, and their Warning Signal will be delayed until 1100.

(c) Sunday: Multiple windward/leeward races in harbor. (See Appendix B)
Rendezvous at: 36 58.13 N 76 22.00 W R N "20" off Hampton Flats
**** Note 3:** On Friday & Sunday, PHRF C & Non-Spin fleets will race on the OD Course.

6.3 PHRF Course:

(a) Friday: Multiple windward/leeward races in harbor. (See Appendix C)
Rendezvous at: 36 58.13 N 76 22.00 W R N "20" off Hampton Flats

(b) Saturday: SBRW Distance Race in Bay. (See Appendix D)
Rendezvous at: 37 01.98 N 76 15.75 W R "2" off Buckroe
**** Note 4:** On Saturday, PHRF C & Non-Spin boats will do the Distance Race.
**** Note 5:** Should the Distance Race be relocated into the harbor on Saturday, rendezvous and race in the harbor as per Appendix D, Page 2.

(c) Sunday: Multiple windward/leeward races in harbor. (See Appendix C)
Rendezvous at: 36 56.97 N 76 22.40 W Y N "J" NE of Mid. Ground Lt

6.4 Cruising/Multihull Course:

(a) **Saturday:** SBRW Distance Race in Bay. (See Appendix D)

Rendezvous at: 37 01.98 N 76 15.75 W R "2" off Buckroe

**** Note 6:** Should the Distance Race be relocated into the harbor on Saturday, rendezvous and race in the harbor as per Appendix D, Page 2.

(b) **Sunday:** One Random Leg Race in harbor. (See Appendix E)

Rendezvous at: 37 00.18 N 76 20.28 W R "4" at Hampton River

**** Note 7:** Cruising/Multi Warning Signal Sunday will be delayed until 1015.

****Note to all fleets: Rendezvous locations are approximate. The RC may locate the starting line within 1 nm of the designated rendezvous point without flying Flag L.**

7.0 Daily Schedules

Thursday, May 31

Opening Party 1800 - 2030
(Free beer and food)
Skippers Meeting 1900

Friday, June 1

Warning 1000
Beer tap open 1600
Party & Pizza Night 1700 - 2030
Daily Awards 1900 (approx.)

Saturday, June 2

Warning 1000
Beer tap open 1600
Party, music, food 1700 - 2030
Daily Awards 1900 (approx.)

Sunday, June 3

Warning 1000
Party & Awards ASAP after racing

- * **Fri : PHRF and One-Design will do multiple windward/leeward races in the harbor. C Fleet and Non-Spin will race on the One-Design Course.**
- * **Sat: PHRF, Cruising, and Multihulls will do a Distance Race in the Bay. C Fleet and Non-Spin will do the Distance Race in the Bay. One-Design will do multiple windward-leeward races in the harbor.**
- * **Sun: PHRF and One-Design will do multiple windward/leeward races in the harbor. C Fleet and Non-Spin will race on the One-Design Course. Cruising and Multihulls will do a Random Leg Race in the harbor.**
- * **Flag "A" displayed with no sound as boats finish means "No more racing today".**
- * **On Sunday, no starting sequence will begin after 1415.**

8. COURSES

8.1 Information for each course is promulgated in the following S.I. Appendices:

- a. **Appendix A** shows the Racing Areas for each day.
- b. **Appendix B** shows information on One-Design Drop Mark Course for all three days.
- c. **Appendix C** shows information on PHRF Drop Mark Course for Friday & Sunday
- d. **Appendix D** shows information on the Saturday Distance Race.
- e. **Appendix E** shows information on the Cruising/Multihull Course for Sunday.
- f. **Appendix F** shows information on Classes, Fleet Splits, Flags, and Order of Starts.

8.2 When appropriate, prior to the Warning Signal, course information will be displayed on a course board located on the RC Signal Boat.

8.3 The RC may also broadcast the course information via the designated VHF radio channel for that course.

9. CLASSES, FLEET SPLITS, AND ORDER OF STARTS

9.1 Classes, Fleet Splits and Order of Starts (Appendix F) will be officially announced, posted, and distributed at the Thursday Skippers Meeting. Preliminary, unofficial information will be posted and updated at HYC and on the event website at www.yachtscoring.com.

9.2 Classes will be organized and, if necessary, sub-divided to produce the best racing.

10. MARKS

10.1 PHRF & One-Design Windward/Leeward Mark Descriptions (Appendices B & C):

Long Weather Mark	5' Orange Inflatable (w/ black band)
Short Weather Mark	3' Orange Inflatable
Weather Offset Mark	2' Red Cylinder (One-Design Course only)
Long Change Mark	5' Yellow Inflatable (w/ black band)
Short Change Mark	3' Yellow Inflatable
Leeward Gate (3s & 3p)	Yellow "West Marine" Inflatables
Starting Pin	5' Green Inflatable
Finish Pin	2' Red Cylinder

10.2 For Saturday's Distance Race: See Appendix D.

10.3 For Sunday's Cruising/Multihull Course: See Appendix E.

11. BOAT CHECK-IN

Before the warning signal for her first race each day, each boat shall pass by the stern of the RC Signal Boat and hail her name and/or sail number until acknowledged by the RC. *(DP) (RC)*

12. THE START

12.1 Races will be started using RRS 26 as modified by Instruction 12.2 below.

12.2 Approximately one (1) minute prior to the beginning of a starting sequence, the RC will make an Attention Signal consisting of a series of short sounds. This is not a timed signal.

12.3 For all windward/leeward courses, the starting line will be between the staff displaying an orange flag on the RC Signal Boat at the starboard end of the line and a green inflatable at the port end.

12.4 Appendix D describes the Saturday Distance Race starting line.

12.5 For Saturday's Distance Race in the Bay, at its own discretion, the RC may move the starting line to Mark X (see Appendix D). To do this, the RC will display Flag "L" with one sound and motor to Mark X, where they will establish a new starting line. The RC's decision to move or not to move the starting line shall not be grounds for redress. This changes RRS 62.1 (a).

12.6 Appendix E describes the Sunday Cruising/Multihull starting line.

13. COLLISION WITH RACE COMMITTEE BOAT

If any boat collides with any Race Committee vessel and causes injury or serious damage, her penalty shall be to retire. *(DP)*

14. RECALLS

14.1 Individual Recalls will be signaled in accordance with RRS 29.1. Additionally, the Race Committee will attempt to notify premature starters via hail on the designated VHF radio channel for that course.

14.2 Failure of this transmission to be made or received, promptness of the notification, or the position of a boat in the notification sequence shall not be grounds for redress. This changes RRS 62.1(a).

15. COURSE CHANGE AFTER START

15.1 To change the next leg of the course, the Race Committee will lay a new mark and remove the original mark as soon as practicable.

15.2 A gate may be adjusted at any time without signal.

15.3 For the PHRF Course only, Flag "C" displayed over a pink flag indicates a course change for the Suoer A Fleet's third (and final) weather leg only. This signal is applicable to no other fleets.

16. SHORTENING COURSE

16.1 Courses may be shortened as per RRS 32.

16.2 For Saturday's SBRW Distance Race, the final sentence of RRS 32.2 is changed to read:

"A course may be shortened even if a boat has already passed the mark at which the race is to be shortened, provided an RC boat is on station and records the exact time at which each boat rounds that mark." All boats will be scored using the time they passed the mark at which the course is shortened.

17. THE FINISH

17.1 For all windward/leeward courses, the finish line will be on the opposite side of the RC Signal Boat from the starting line. The finish line will be between the staff displaying an orange flag on the RC Signal Boat at the starboard end of the finish line (looking downwind) and a red inflatable at the port end. The finish line will be located approx. 600' to leeward of the leeward mark or gate. (See Appendices B & C).

17.2 For Saturday's Distance Race in the Bay, the finish line will be between CCV Bay Mark Q (R "22") at the port end of the line and the staff displaying an orange flag on the Fort Monroe Seawall at the starboard end. (See Appendix D) If Saturday's Distance Race is moved into the harbor, the finish will be as per Appendix D, Page 2.

17.3 For Sunday's Cruising/Multihull Course, the finish line is as described in Appendix E.

17.4 For all courses, each boat is responsible for taking her own finish time and recording the name and/or sail number of the boat finishing directly ahead and astern of her. This information shall be provided to the Race Committee upon request.

18. THE PENALTY SYSTEM

18.1 For the Viper and J-70 fleets only, Appendix V1 (Penalty at the Time of the Incident) is in effect.

18.2 For all other fleets, RRS 44.1 is in effect.

19. CALLING BOATS IN

19.1 In the interest of starting another race or completing the day's racing in a timely fashion, the Race Committee may assign a finish position to any boat(s) still racing, provided the position(s) can be determined in a reasonable manner. Such boat(s) will be scored as finished. This changes RRS 28.1, 35, A3, and A4.1 and A4.2.

19.2 If another race is to be sailed that day, any boats called in as per S.I. 19.1 shall proceed as quickly as possible to the starting area to facilitate prompt starting of the next race. (DP)

20. TIME LIMITS

20.1 For the One-Design Course, any race in which no boat sails the course and finishes within two (2) hours after the start of her fleet will be abandoned for that fleet. Also, any boat still racing but not finished within 20 minutes after the first boat in her fleet sails the course and finishes within the time limit will be scored TLE (Time Limit Expired) without a hearing. On Friday and Sunday, the TLE finish window for the Non-Spin Fleet only will be 30 minutes.

20.2 For the PHRF Course on Friday and Sunday, any race in which no boat sails the course and finishes within 2 ½ hours after the start of that fleet will be abandoned for that fleet. Also, any boat still racing but not finished within 30 minutes after the first boat in her fleet sails the course and finishes within the time limit will be scored TLE (Time Limit Expired) without a hearing.

20.3 For the Distance Race on Saturday, the time limit for all boats to finish is 1600. Boats still racing but not finished by 1600 will be scored TLE (Time Limit Expired) without a hearing.

20.4 For the Cruising/Multihull Course on Sunday, the time limit for all boats to finish is 1415. Boats still racing but not finished by 1415 will be scored TLE (Time Limit Expired).

20.5 A boat scored TLE (Time Limit Expired) will, without a hearing, be scored one point more than the number of boats in her fleet who sailed the course properly and finished within the time limit. In no case may this score be more than the number of boats entered in her fleet. This changes RRS 35, A4.2, A5, and A11.

21. RETIRING

Any boat retiring from a race or leaving the racing area prior to a subsequent race that day shall promptly notify the Race Committee for her course, either by hail or radio transmission on the designated VHF radio channel. Such attempt at notification shall be continued until acknowledged by the Race Committee. *(DP) (RC)*

22. SCORING

22.1 All PHRF and Cruising Fleets will be scored Time on Distance.

-The Windward/Leeward rating will be used for all races on Friday and Sunday.

- The PHRF Circular Random Rating will be used for Saturday's Distance Race only.

22.2 Multihulls will be scored Time on Time using CMA ratings.

22.3 Appendix A2.1 is modified as follows:

a. If fewer than six (6) races are completed, a boat's series score will be the total of her race scores.

b. If six (6) or more races are completed, a boat's series score will be the total of her scores, excluding her worst excludable score.

22.4 The completion of at least one race will constitute a regatta.

22.5 All scoring and race results will be posted as soon as possible on www.yachtscoring.com.

In addition, printed results will be posted on the window at the NE corner of the HYC lounge.

22.6 Daily trophies will be computed by combining all races for that day into a single score.

22.7 All races will be considered separately for overall Race Week scoring.

23. PROTESTS

23.1 The Judges Table and Protest Notice Board will be located in the HYC lounge.

23.2 Written protests must be delivered to the Judges' Table within one hour of the RC Signal Boat for that boat's course docking at HYC. Protest forms will be available at the Judges Table.

23.3 US Sailing Prescriptions to RRS 63.2 and 63.4 will not apply.

23.4 All protest information including time limits, protests filed, and approximate hearing schedules will be posted on the electronic Official Notice Board within 20 minutes of the end of protest time. In addition, courtesy written information may be posted on the Protest Notice Board. These postings constitute the notice required for RC or Protest Committee protests required under RRS 61.1(b). It is each boat's responsibility to check to see if she is cited in a protest or may have an interest at a hearing.

23.5 If the RC posts a list of boats scored OCS or ZFP before the Protest Time Limit, a request for redress based on the posted score shall be made no later than fifteen (15) minutes after the Protest Time Limit. This changes RRS 62.2

23.6 On Sunday, a request for redress from a jury decision shall be delivered no later than thirty (30) minutes after the decision was posted. This changes RRS 62.2.

24. RADIOS

24.1 All boats shall carry a working VHF radio. *(DP)*

24.2 Except in an emergency, a boat that is racing shall not make voice or data transmissions and shall not receive voice or data communications that are not available to all boats. This restriction also applies to mobile telephones. *(DP)*

24.3 The Race Committee will not respond to transmissions from competitors except to acknowledge retirements, protests, penalties reported or taken, or requests for emergency assistance.

24.4 Race Committee broadcasts of its intentions, courses to be sailed, flag sequences, postponement updates, etc. are as a courtesy only and in no way relieve competitors of their responsibility to monitor and respond to Race Committee flags and signals.

24.5 Failure of the RC to make a broadcast, the timing of a broadcast, or failure of a boat to hear a broadcast, shall not be grounds for redress. This changes RRS 62.1(a).

24.6 The designated radio frequency for each course is:

- | | |
|---|--|
| a. One-Design Course (Daily) | VHF-71 |
| b. PHRF Course (Friday & Sunday) | VHF-72 |
| c. SBRW Distance Race (Saturday) | VHF-72 (Finish Line on Seawall = VHF-9) |
| d. Cruising/Multihull (Sunday) | VHF-73 |

25. SAFETY

25.1 A boat shall not exercise right of way over, cross in close proximity to, or interfere in any way with reasonable transit of the race area by military vessels, commercial freighters, tugs and tows, or other commercial vessels that are unable to respond readily. Any boat protested under this rule shall have the burden of proving that she did not interfere with such vessel.

25.2 If a boat without way in a ship channel infringes RRS 42.1 by using her engine to clear the channel, she may continue racing but, at the finish line, must inform the Race Committee of the incident and, at a subsequent hearing, must satisfy the Protest Committee that she gained no advantage by using her engine. RRS 62.1 is changed to allow consideration of this request. *(DP)*

25.3 RRS 40 (Personal Buoyancy) is changed to read, "It shall be the individual responsibility of each competitor to wear adequate personal buoyancy when conditions warrant."

26. AWARDS & PRIZES

26.1 Appropriate daily and series awards will be given to boats in each fleet.

26.2 A Boat of the Day Flag will be presented each day to the outstanding boat in each Division.

26.3 Other "Special Awards" flags may be presented daily and on Sunday.

26.4 Prizes will be awarded each evening at the Spinsheet sponsored "Racers Beer Raffles".

26.5 The Black Seal Cup (Boat of the Week) will be presented at the awards ceremony Sunday.

27. MEDIA RIGHTS

By their entry, competitors give absolute right and permission for any photograph or video footage of themselves or the boat they are sailing to be published in any media the regatta organizers see fit.

28. DISCLAIMER OF LIABILITY

28.1 Competitors participate in the regatta entirely at their own risk. See rule 4, Decision to Race. The organizing authority will not accept any liability for material damage or personal injury or death sustained in conjunction with or prior to, during, or after the regatta.

28.2 It is the sole responsibility of the Skipper to ensure the boat complies with all class rules and that the boat is sound, seaworthy, and manned by a competent crew of appropriate number.

29. REGATTA CONTACTS AND OFFICIALS:

Regatta Chairman = Jack Pope

Registration & Info = Lin McCarthy (757) 850-4225 mcbear@earthlink.net

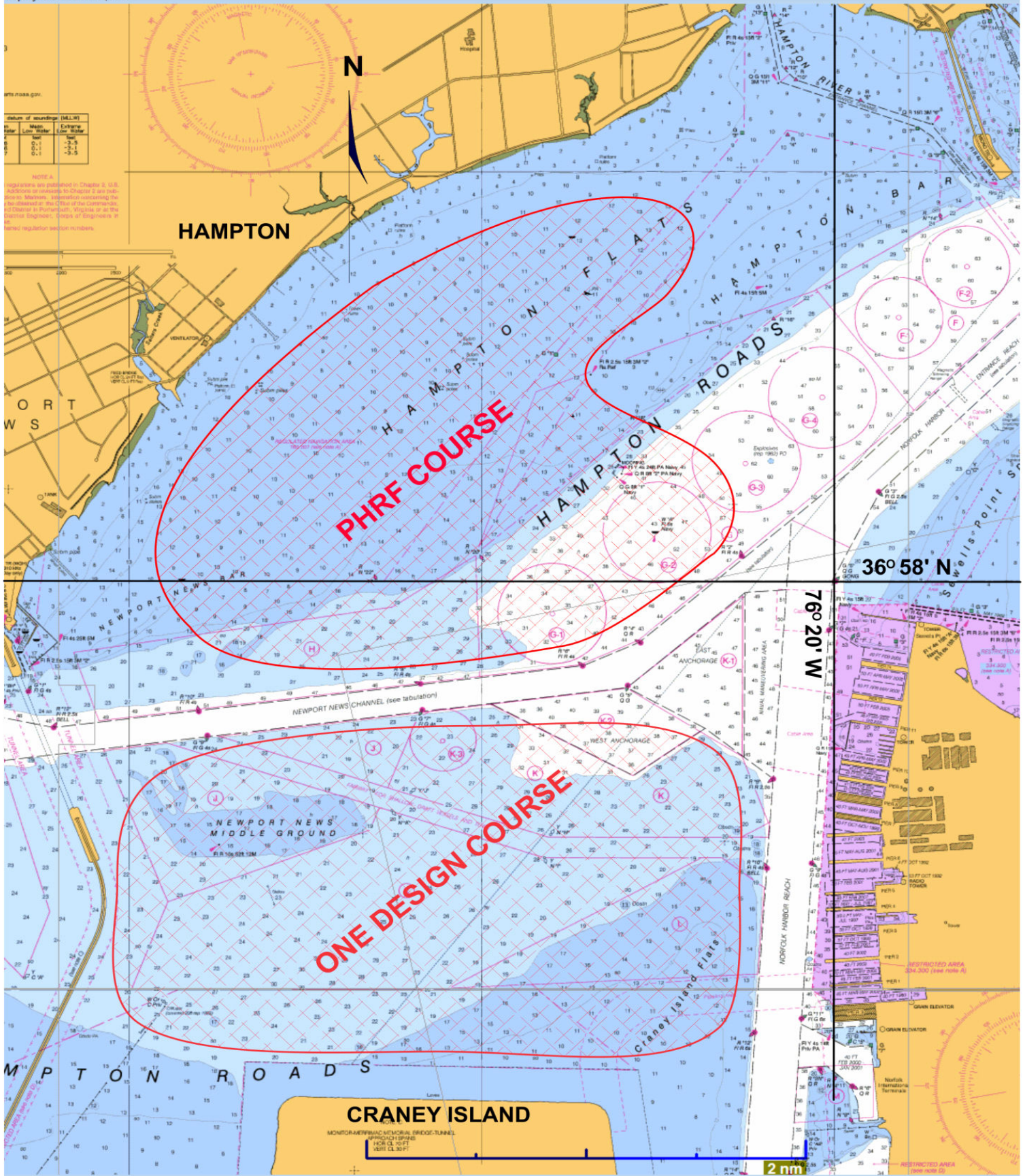
Principal Race Officer = John McCarthy

One-Design Course = Brian Deibler

Cruising/Multihull = Tom Connors

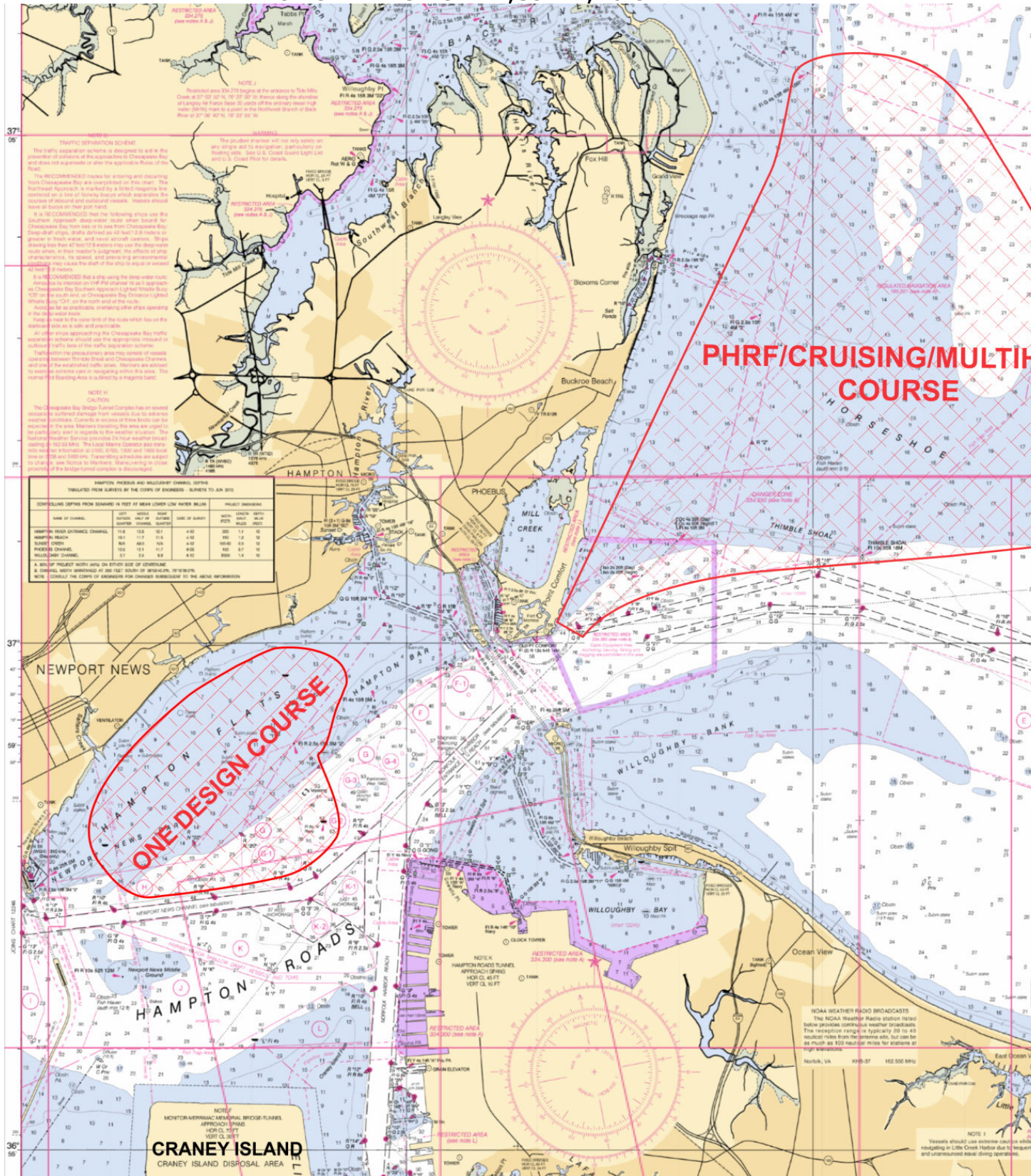
Official Scorer = Leanne Cranfill

Chief Judge = Jerry Thompson

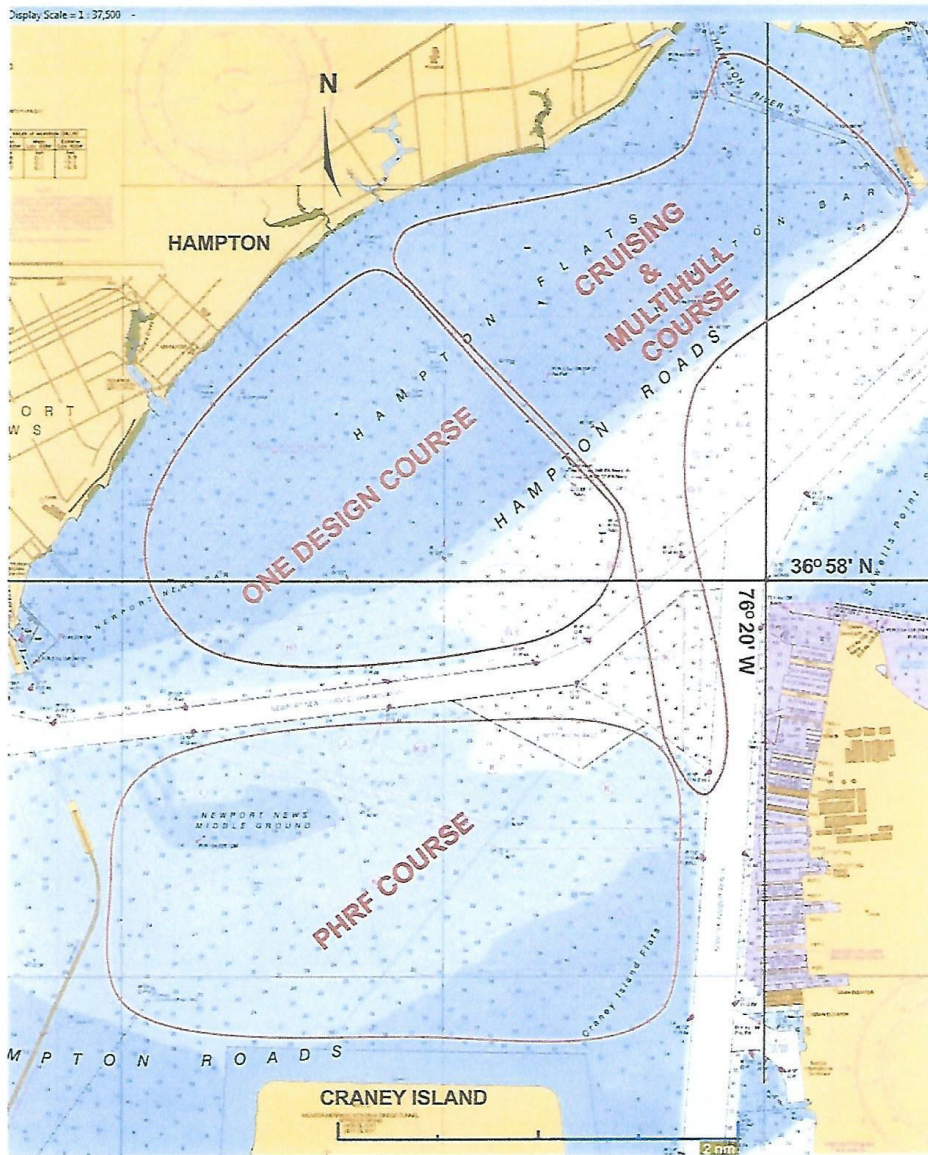


APPENDIX A
RACING AREA - FRIDAY, MAY 31, 2019

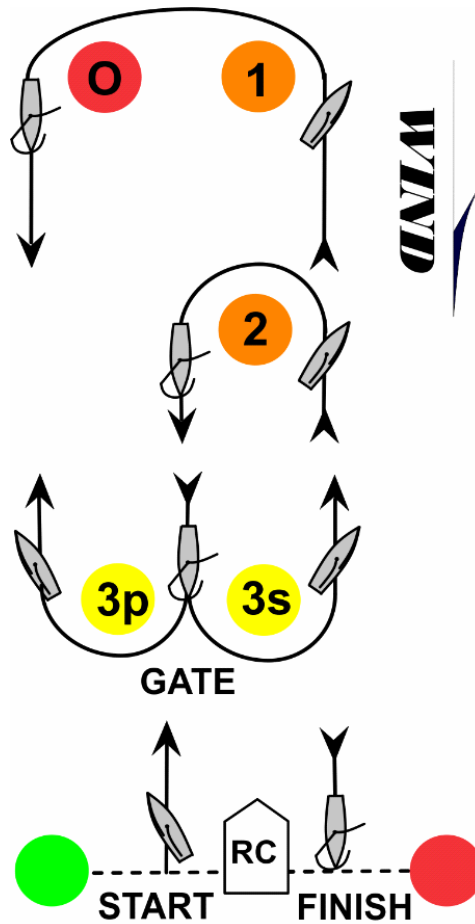
APPENDIX A RACING AREA - SATURDAY, JUNE 1, 2019



APPENDIX A
RACING AREA - SUNDAY, JUNE 2, 2019



APPENDIX B
ONE-DESIGN COURSE



* **Course Designations:**

- Course 3L = Start - Mark 1 - Offset - Gate - Mark 1 - Offset - Gate - Mark 1 - Offset - Finish
- Course 2L = Start - Mark 1 - Offset - Gate - Mark 1 - Offset - Finish
- Course 3S = Start - Mark 2 - Gate - Mark 2 - Gate - Mark 2 - Finish
- Course 2S = Start - Mark 2 - Gate - Mark 2 - Finish

* **Each fleet shall sail the course indicated in BLACK on the course board.**

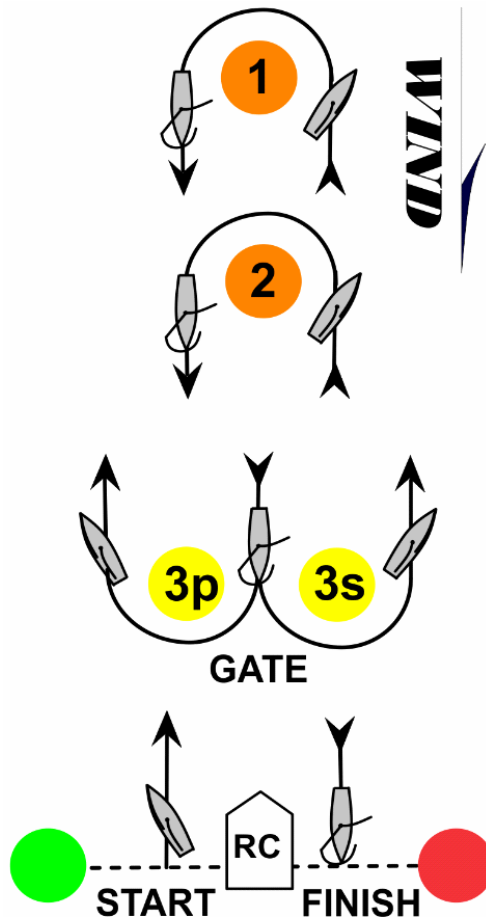
- * The distance indicated is to Mark 1. Mark 2 will be set approx. 0.2 – 0.3 nm short of Mark 1.
- * If only one line of placards is shown, there will be no Mark 2.
- * Distance and bearing will be indicated by RED numbers.
- * There will be no offset mark set with Mark 2 or with any change mark.

* All marks, except the gate, shall be left to PORT.

* If only one gate mark is present, round it to PORT.

* The angle of the gate may be adjusted at any time without signal.

APPENDIX C
PHRF COURSE (FRIDAY & SUNDAY)



*** Course Designations:**

Course 3L = Start - Mark 1 - Gate - Mark 1 - Gate - Mark 1 - Finish

Course 2L = Start - Mark 1 - Gate - Mark 1 - Finish

Course LS = Start - Mark 1 - Gate - Mark 2 - Finish

Course 2S = Start - Mark 2 - Gate - Mark 2 - Finish

- * Each fleet shall sail the course indicated in **BLACK** on the course board.
- * The distance indicated is to Mark 1. Mark 2 will be set approx. 0.2 – 0.3 nm short of Mark 1.
- * Distance and bearing will be indicated by **RED** numbers.

-
- * **For Super A Fleet only**, Flag "C" displayed over a **PINK** flag indicates a course change on their third (and final) weather leg. This signal does not indicate a course change for any other fleet.
 - * All marks, except the gate, shall be left to **PORT**.
 - * If only one gate mark is present, boats shall round it to **PORT**.
 - * The angle of the gate may be adjusted at any time without signal.

APPENDIX D (Page 1 of 2)
SATURDAY DISTANCE RACE IN BAY - 2019

MARK DESCRIPTIONS AND LOCATIONS

Starting Mark = Day Beacon R "2" (Off Buckroe)	37 01.98 N	76 15.75 W
Mark "J" FI G 2.5s "1YR" (York River Chan)	37 07.62 N	76 09.85 W
Drop Mark 1 ("D1") Orange Cylinder	37 05.75 N	76 12.50 W
Drop Mark 2 ("D2") Orange Cylinder	37 02.20 N	76 10.50 W
RW Mo (A) WHIS "HC" (Tail of Horseshoe)	37 01.32 N	76 08.97 W
Drop Mark 3 ("D3") Yellow Inflatable	37 03.50 N	76 12.60 W
Mark "X" FI G 2.5s "3" (Salt Ponds Entrance)	37 03.23 N	76 15.65 W
Finish Mark = R "22" (Off Fort Monroe Seawall)	37 00.15 N	76 17.87 W

COURSE DESCRIPTIONS

Super Course - PHRF Super A

Start at R "2" -- "J" (Star) -- "Mo (A)" (Star) -- "X" (Port) -- Finish at R "22" (23.0 nm)

Course A - PHRF A (plus Multihulls)

Start at R "2" -- "D1" (Star) -- "Mo (A)" (Star) -- "X" (Port) -- Finish at R "22" (19.2 nm)

Course B - PHRF B

Start at R "2" -- "D1" (Star) -- "D2" (Star) -- "X" (Port) -- Finish at R "22" (16.3 nm)

Course C - PHRF C, Non-Spin, and Cruising A

Start at R "2" -- "D1" (Star) -- "D3" (Star) -- "X" (Port) -- Finish at R "22" (12.9 nm)

Course D – Cruising B

Start at R "2" -- "X" (Star) -- "D3" (Star) -- "X" (Port) -- Finish at R "22" (9.7 nm)

**** PHRF Circular Random ratings will be used for this race.**

**** If light air, the starting line for all fleets may be moved to Mark X. See S.I. 12.5.**

**** Lat/lons are approximate and not intended for navigation.**

**** Unless the course is shortened, all boats will finish at the Fort Monroe Seawall.**

**** All RC radio communications will be via VHF-72, except when finishing.**

**** The Finish Line Team will monitor VHF-9 and may hail boats as they finish. They will respond only to emergency calls or reports of protests/redress. Boats should monitor VHF-9 while finishing and respond to RC requests.**

APPENDIX D (Page 2 of 2)

SATURDAY DISTANCE RACE (IF IN HARBOR) - 2019

**IF SATURDAY'S DISTANCE RACE IS RELOCATED INTO THE HARBOR,
BOATS SHALL SAIL THE COURSES SHOWN BELOW**

**** Start line for all boats = 36 59.30 N 76 21.50 W (Inflatable cylinder off Hampton Flats)**

**** Finish line for all boats = 37 00.18 N 76 20.28 W (Mark "A" – Mouth of Hampton River)**

Mark "W"	Middle Ground Light	36 56.71 N	76 23.48 W
Mark "X"	FI R 6s R "12" (Norf. Harbor Reach)	36 55.80 N	76 20.46 W
Mark "A"	Day Beacon R "4" (Mouth of River)	37 00.18 N	76 20.28 W
Mark "I"	Day Beacon G "1" (Hampton Flats)	36 59.12 N	76 21.60 W
Mark "E"	FI R 2.5s 15ft 4M "2" (Hampton Bar)	36 59.03 N	76 21.37 W
Mark "H"	R N "20" (Hampton Flats)	36 58.13 N	76 22.03 W
Mark "C"	R N "14" (Hampton Bar)	36 59.77 N	76 19.40 W
Mark "K"	Q R R "4" (N News Channel)	36 57.70 N	76 21.10 W
Mark "J"	FI R 4s R "2" (N News Channel)	36 58.12 N	76 20.53 W
Mark "M"	FI R 4s R "8" (N News Channel)	36 57.50 N	76 22.35 W
Mark "O"	FI R 4s R "10" (N News Channel)	36 57.36 N	76 23.60 W

Courses to be Sailed by Each Fleet

Super Course – PHRF Super A

**Start – W (port) – X (port) – I (port) – O (port) – J (port) – C (port) – H (star)
E (star) – Finish at A (21.1 nm)**

Course A – PHRF A (plus Multihulls)

**Start – W (port) – X (port) – I (port) – M (port) – C (port) – H (star)
E (star) – Finish at A (19.2 nm)**

Course B – PHRF B

**Start – W (port) – X (port) – K (star) – C (port) – H (star)
E (star) – Finish at A (15.3 nm)**

Course C – PHRF C, Non-Spin, and Cruising A

**Start – O (port) – J (port) – C (port) – H (star)
E (star) – Finish at A (12.3 nm)**

Course D – Cruising B only

Start – O (port) – J (port) – H (star) – E (star) – Finish at A (8.9 nm)

**** PHRF Circular Random ratings will be used for this race.**

****Lat/Lons are approximate and not intended for navigation.**

****All RC radio communications between the RC and fleet will be via VHF-72.**

APPENDIX E

CRUISING/MULTIHULL COURSE SUNDAY IN HARBOR

**** Rendezvous in harbor at Day Beacon R "4" (Mouth of the Hampton River)**

**** All boats will start and finish at Day Beacon "4"**

**** Warning on Sunday for Cruising Fleet is 1015**

CRUISING A & MULTIHULLS WILL SAIL THE FOLLOWING COURSE

<u>Marks</u>	<u>Location</u>	<u>Leave to</u>	<u>Lat/Lon</u>	
Day Beacon R "4"	Mouth of River	START	37 00.18 N	76 20.28 W
Day Beacon G "1"	Hampton Flats	PORT	36 59.12 N	76 21.60 W
FI R 4s "8"	N News Channel	PORT	36 57.50 N	76 22.35 W
R N "14"	Hampton Bar	PORT	36 59.77 N	76 19.40 W
Day Beacon R "18"	Hampton Bar	STAR	36 58.78 N	76 21.07 W
FI R 2.5s 15ft 4M "2"	Hampton Bar	STAR	36 59.03 N	76 21.37 W
Day Beacon R "4"	Mouth of River	FINISH	37 00.18 N	76 20.28 W

Distance = 10.0 nm

CRUISING B WILL SAIL THE FOLLOWING COURSE

<u>Mark</u>	<u>Location</u>	<u>Leave to</u>	<u>Lat/Lon</u>	
Day Beacon R "4"	Mouth of River	START	36 00.18 N	76 20.28 W
Day Beacon G "1"	Hampton Flats	PORT	36 59.12 N	76 21.60 W
FI R 4s R "2"	N News Channel	PORT	36 58.12 N	76 20.53 W
R N "14"	Hampton Bar	PORT	36 59.77 N	76 19.40 W
Day Beacon R "18"	Hampton Bar	STAR	36 58.78 N	76 21.07 W
FI R 2.5s 15ft 4M "2"	Hampton Bar	STAR	36 59.03 N	76 21.37 W
Day Beacon R "4"	Mouth of River	FINISH	37 00.18 N	76 20.28 W

Distance = 8.2 nm

**** Lat Lons are approximate and not intended for navigation.**

**** The Race Committee will communicate with the fleet on VHF-73.**

**** The time limit for all boats is 1400.**

APPENDIX F (Page 1 of 2)

FLEET SPLITS, CLASS FLAGS, & ORDER OF STARTS

FRIDAY & SUNDAY PHRF RACING IN HARBOR

<u>Fleet</u>	<u>Ratings</u>	<u>Class Flag (on RC Boat)</u>	<u>Class ID (on backstay)</u>
PHRF A1	50-88	Code Flag "9"	Code Flag "9"
SUPER A	Up to 49	Code Flag "1"	Code Flag "1"
PHRF A2	89-109	Blue Flag	Blue Ribbon
PHRF B1	110-130	Code Flag "6"	Code Flag "6"
PHRF B2	131-151	Yellow Flag	Yellow Ribbon

DAILY ONE-DESIGN RACING IN HARBOR

<u>Fleet</u>	<u>Ratings</u>	<u>Class Flag (on RC Boat)</u>	<u>Class ID (on backstay)</u>
Viper 640	One Design	Viper Logo	None
J-70	One-Design	Green Flag	Green Ribbon
PHRF C	152 and Up	Code Flag "7"	Code Flag "7"
Non-Spin (2 HS)	All Ratings	Code Flag "5"	Code Flag "5"

**** Note : On Friday & Sunday, PHRF C and Non-Spinnaker will race in the harbor on the One-Design Course.**

APPENDIX F (Page 2 of 2)

FLEET SPLITS, CLASS FLAGS, & ORDER OF STARTS

SATURDAY DISTANCE RACE

<u>Fleet</u>	<u>Ratings</u>	<u>Class Flag (on RC Boat)</u>	<u>Class ID (on backstay)</u>
Multihulls	All Ratings	Purple Flag	Purple Ribbon
Super A	Up to 49	Code Flag "1"	Code Flag "1"
PHRF A1	50-88	Code Flag "9"	Code Flag "9"
PHRF A2	89-109	Blue Flag	Blue Ribbon
PHRF B1	110-130	Code Flag "6"	Code Flag "6"
PHRF B2	131-151	Yellow Flag	Yellow Ribbon
PHRF C	152 and Up	Code Flag "7"	Code Flag "7"
Non-Spin (2HS)	All Ratings	Code Flag "5"	Code Flag "5"
Cruising A	Up to 169	White Flag	White Ribbon
Cruising B	170 and Up	Green Flag	Green Ribbon

SUNDAY CRUISING/MULTIHULL COURSE

<u>Fleet</u>	<u>Ratings</u>	<u>Class Flag (on RC Boat)</u>	<u>Class ID (on backstay)</u>
Multihulls	All Ratings	Purple Flag	Purple Ribbon
Cruising A	Up to 169	White Flag	White Ribbon
Cruising B	170 and Up	Green Flag	Green Ribbon

Note: As per S.I. 3.4, all boats must display the appropriate class flag or ribbon from the backstay. (DP)

Note: For fleets flying ribbons, the appropriate ribbon will be provided to each boat in her Skippers Bag given out at Check-In Thursday.